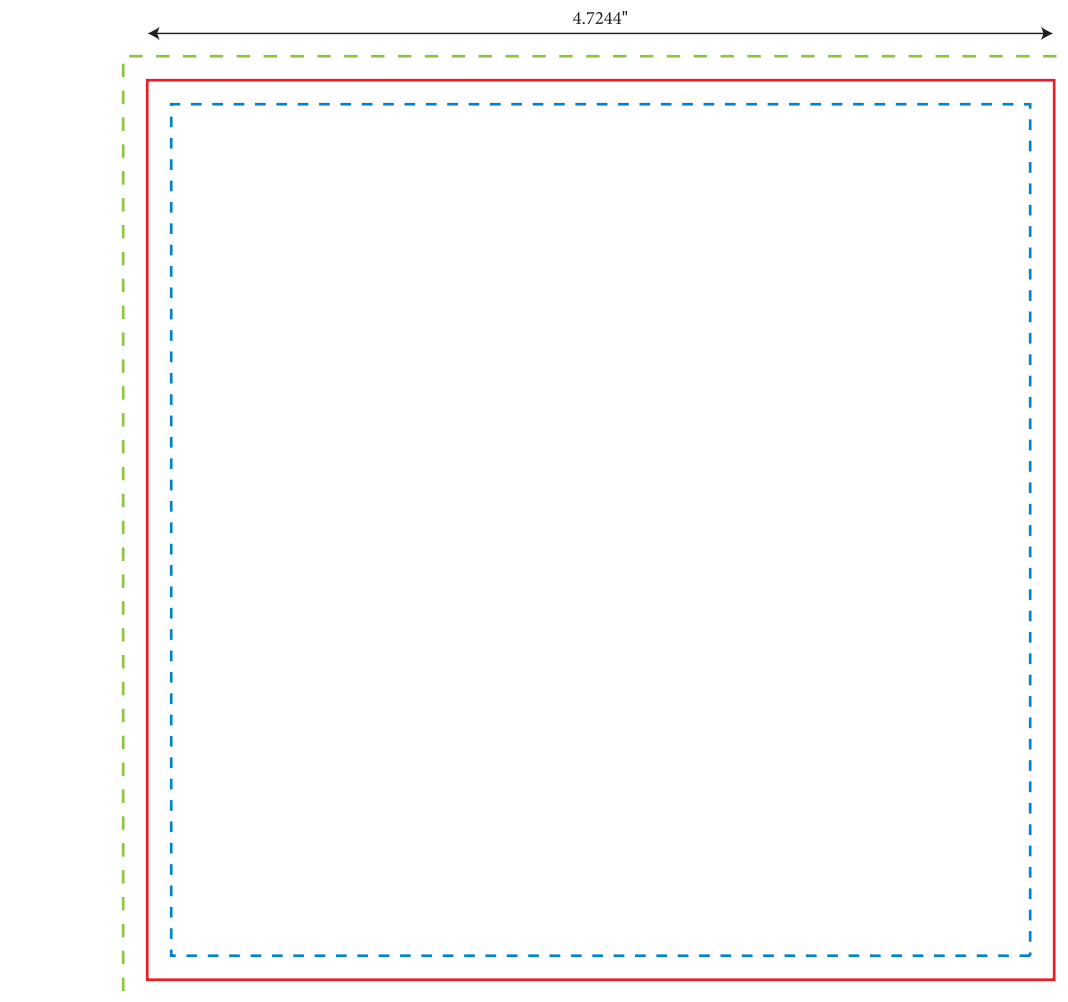
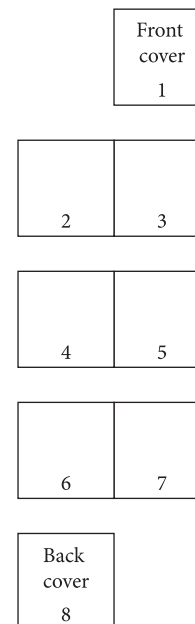


CD BOOKLET
SINGLE PAGES
4.7244" X 4.685"



- Trim
- - - Fold/Score/Perf
- - - Text-safe boundary - No text outside this area. Keep text 1/8" away from all trim and fold lines.
- - - Bleed - Extend all art/pictures to this line, 1/8" outside the trim.



Make 8 separate facing pages in your document like this, each one 4.7244" x 4.685".

This example is for an 8-page booklet. For more pages, follow this pattern, adding pages in multiples of four.

Note: No bleed is necessary on pages 2-7 in the middle where the pages meet.